

**SPIN** X mma

**Spin X MMA is a design led brand and a universe of modern products to make your life simple, joyful and organized.**

**Edgy buoyant and joyous living**

## **Founding Principal**

**We believe that good design should be affordable for everyone.**

**We believe that our products should be honest, high quality and sustainable.**

**To design and create simple yet exciting products to be available to world wide audience at an honest price and speed is our founding principal.**

## **Design Philosophy**

**Our design principals are deeply inspired by minimalism, simplicity & ‘form follows construction’ methodologies.**

**Spin X MMA’s design and manufacturing teams are completely integrated and work together to offer consumers practical, edgy and quality product at a fast pace.**

**Our design office and MMA Design Experience Center is in Bengaluru, the capital of the state Karnataka also known as 'The Land of Gold'.**

**We have regional teams in Delhi, Mumbai, Pune and Chennai.**



## **MMA Design Experience Center**

Ground Floor, Unit A G02, Brigade Signature Towers  
Old Madras Rd, Kattamanallur, Sannatammanahalli,  
Bengaluru, Karnataka

562129

# Product Range

## Seating

Chairs  
Loungers  
Sofa  
Benches  
Barstools

## Tables

Center  
Side  
Dining  
Study

## Storage

Bar  
Consoles  
Trolleys  
Lockers  
Shelves

## Etcetera

Planters  
Lamps

## Beds

# Seating





SEATING

# Loungers





SEATING

# Chairs





SEATING

# Barstools





SEATING

# Benches



# Tables





TABLES

# Center





TABLES

Side



TABLES

# Dining



TABLES

# Study



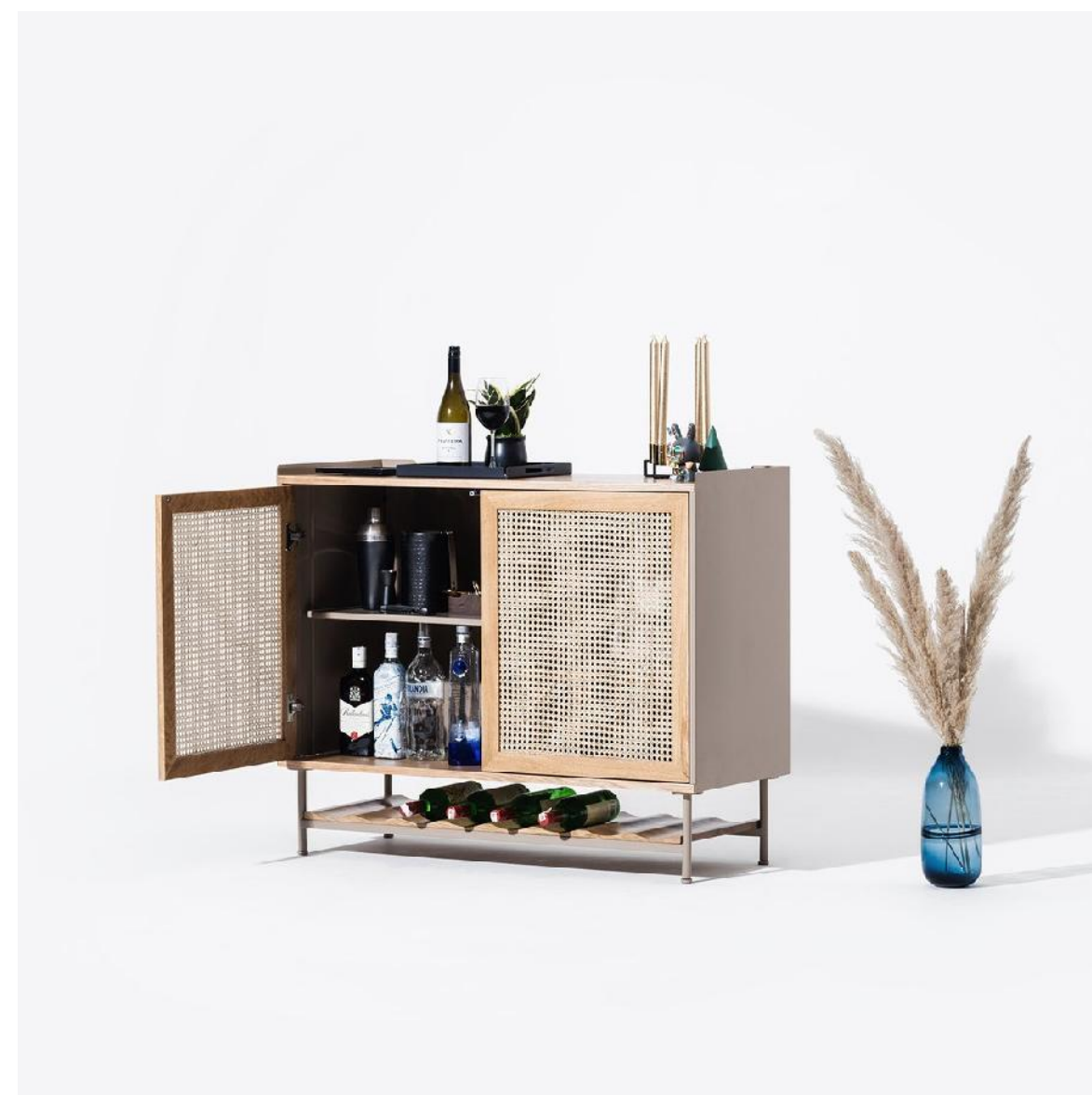
# Storage



STORAGE

# Bar



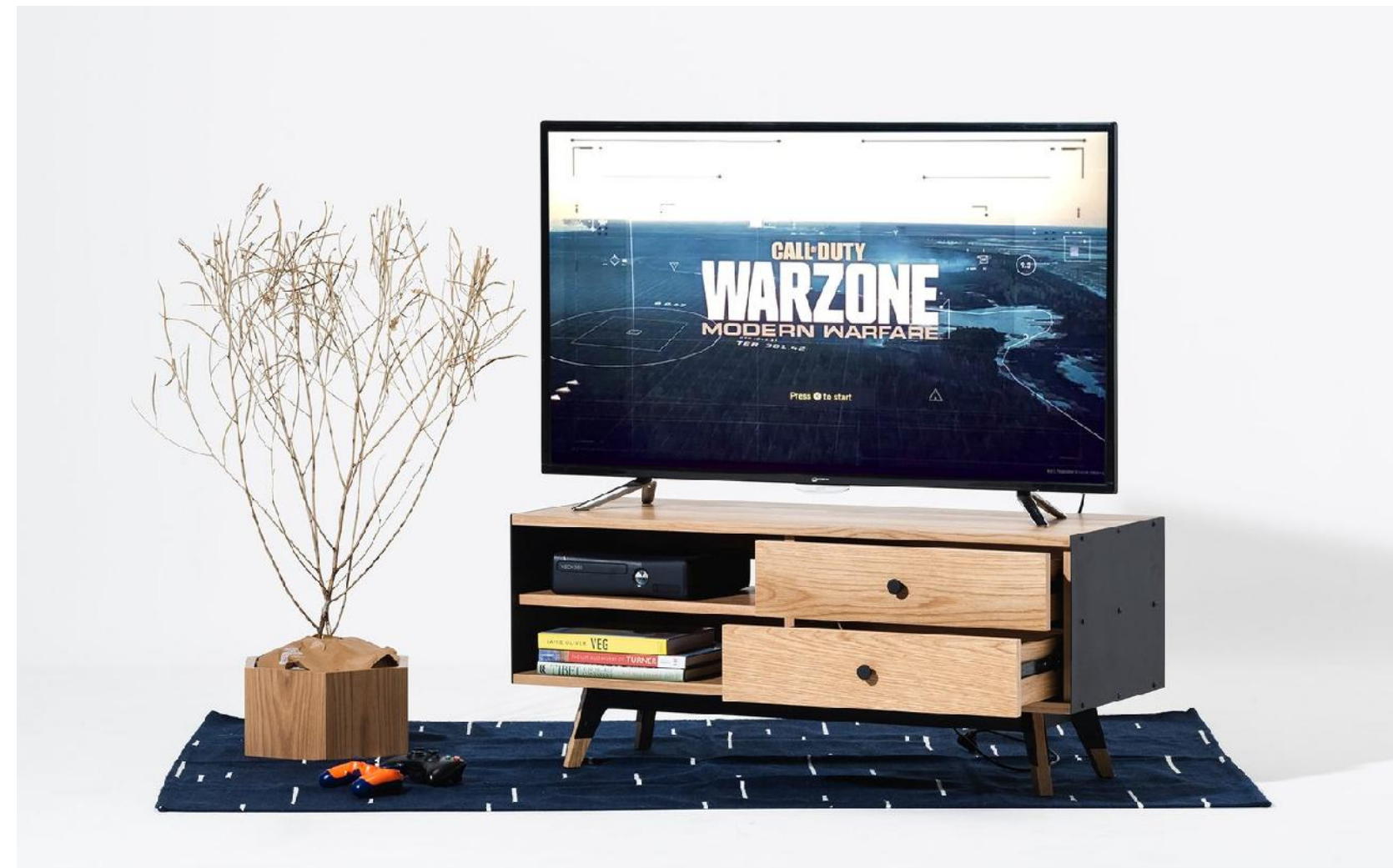




STORAGE

# Consoles





STORAGE

# Trolleys



STORAGE

# Lockers

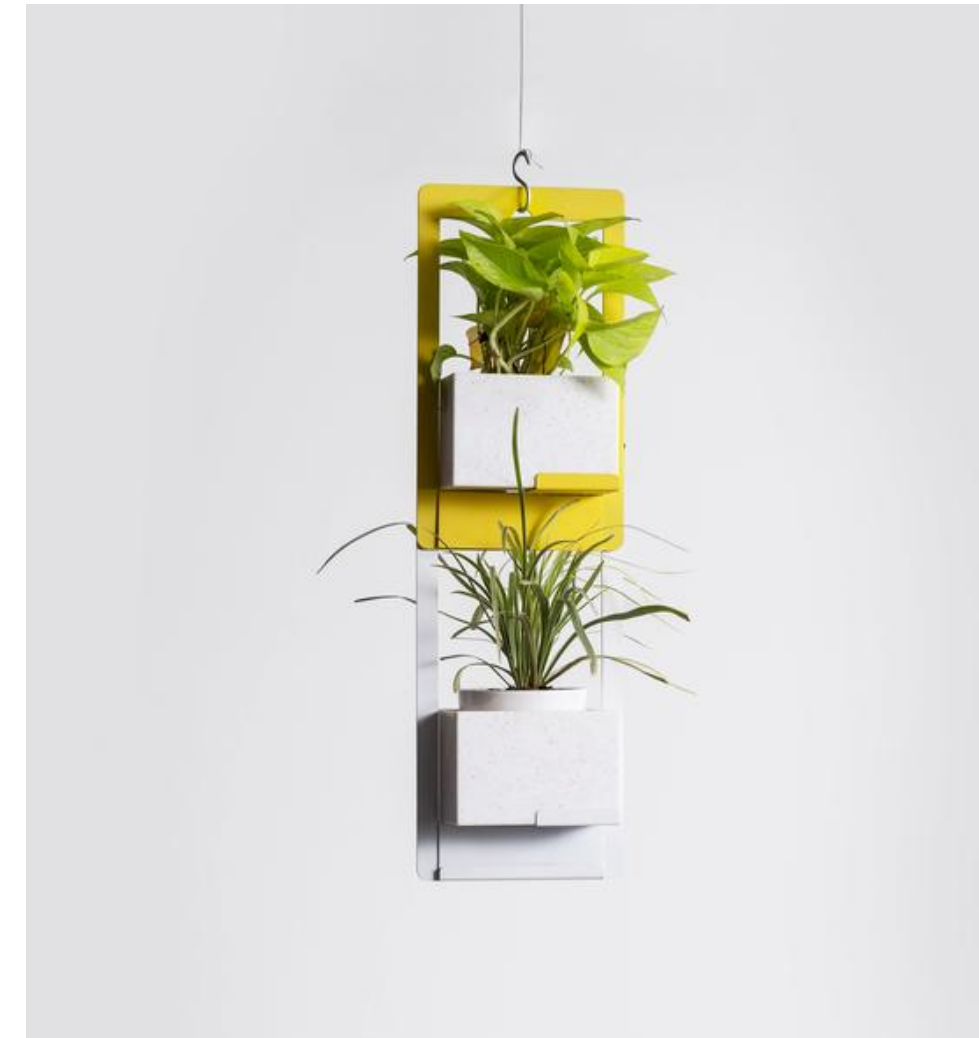


Etcetera



ETCETERA

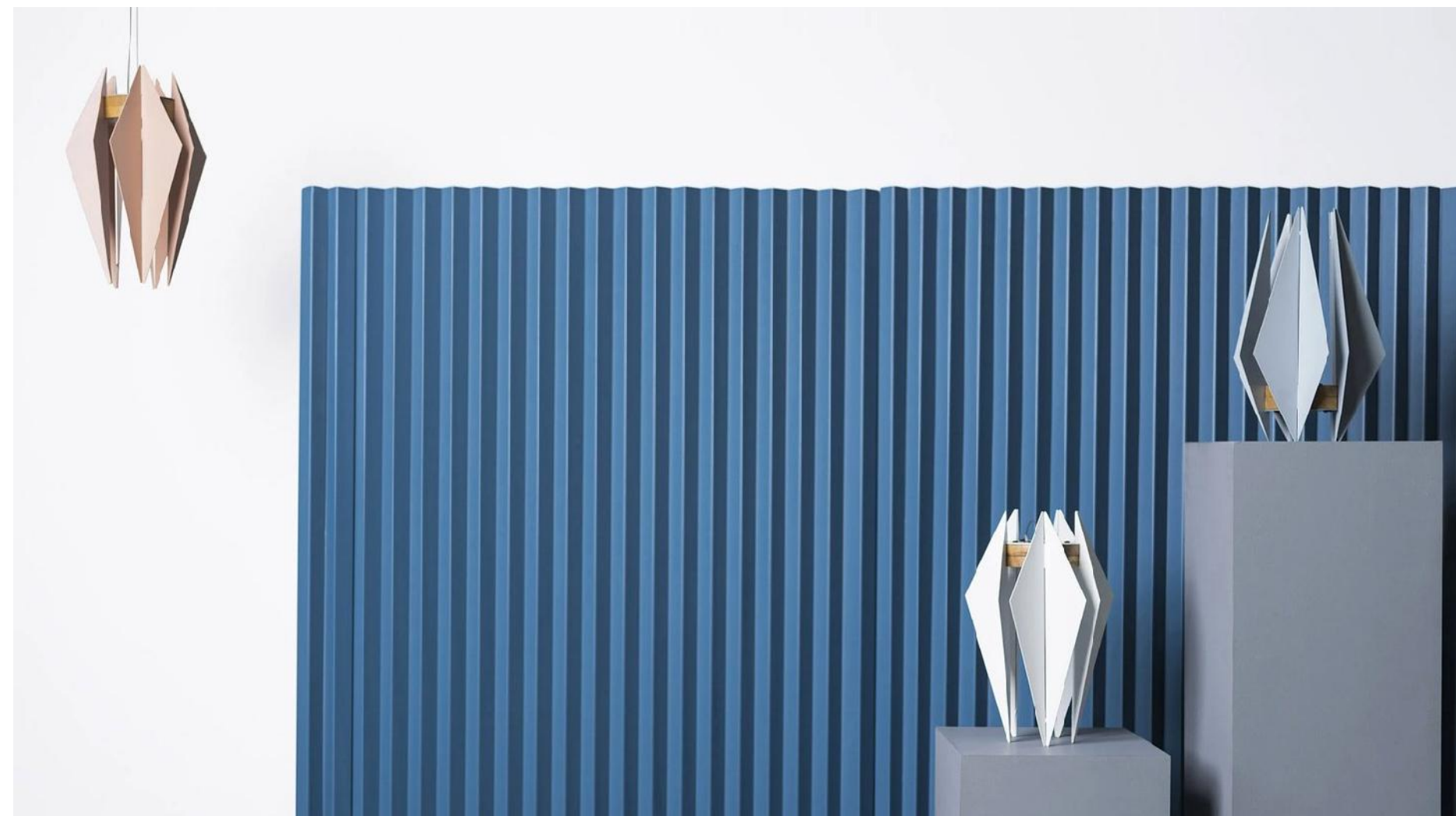
# Planters





ETCETERA

# Lamps





# Beds





## Systems range

### Alpha

Shelving  
Bookshelves  
Storage  
Library

### GRID

Office  
Partitions  
Storage  
Shelving

### Pantries

Corporate  
pantries

### Workstations

Single Seating  
Front Seating  
Face to Face Seating

# Alpha



## **About Alpha**

**The ALPHA all-wall-system is intelligent, versatile and immensely adaptable. It defines the personality of your room areas while simultaneously improving their efficiency and making them appear lighter, cleaner, airier.**

**SPIN** x mma

---



SPIN x mma



**SPIN** x mma

---





**SPIN** x mma



**SPIN** x mma

---



SPIN x mma



SPIN x mma



SPIN x mma



SPIN x mma





# □ GRID □

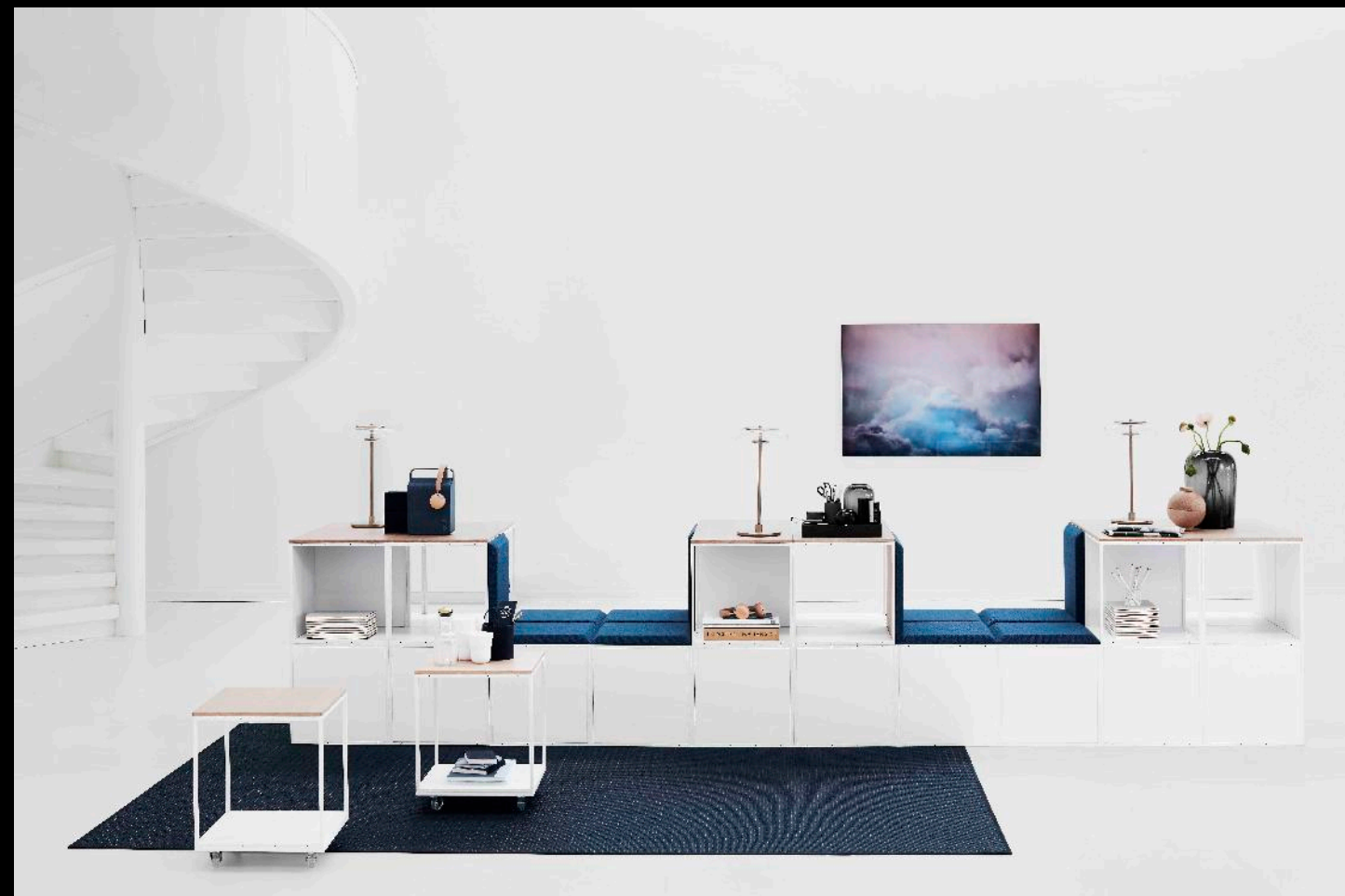
By

**SP/N** x mma





# GRID



Adaptable. Durable. Elegant.

GRID is an architectural interior system that conquers the challenges of any space.

The adaptability of GRID gives its user the freedom to design a cohesive interior system with multiple functions; perfect for hotels, offices, showrooms, stores, restaurants, museums, galleries, exhibitions, events and everywhere else.

## GRID



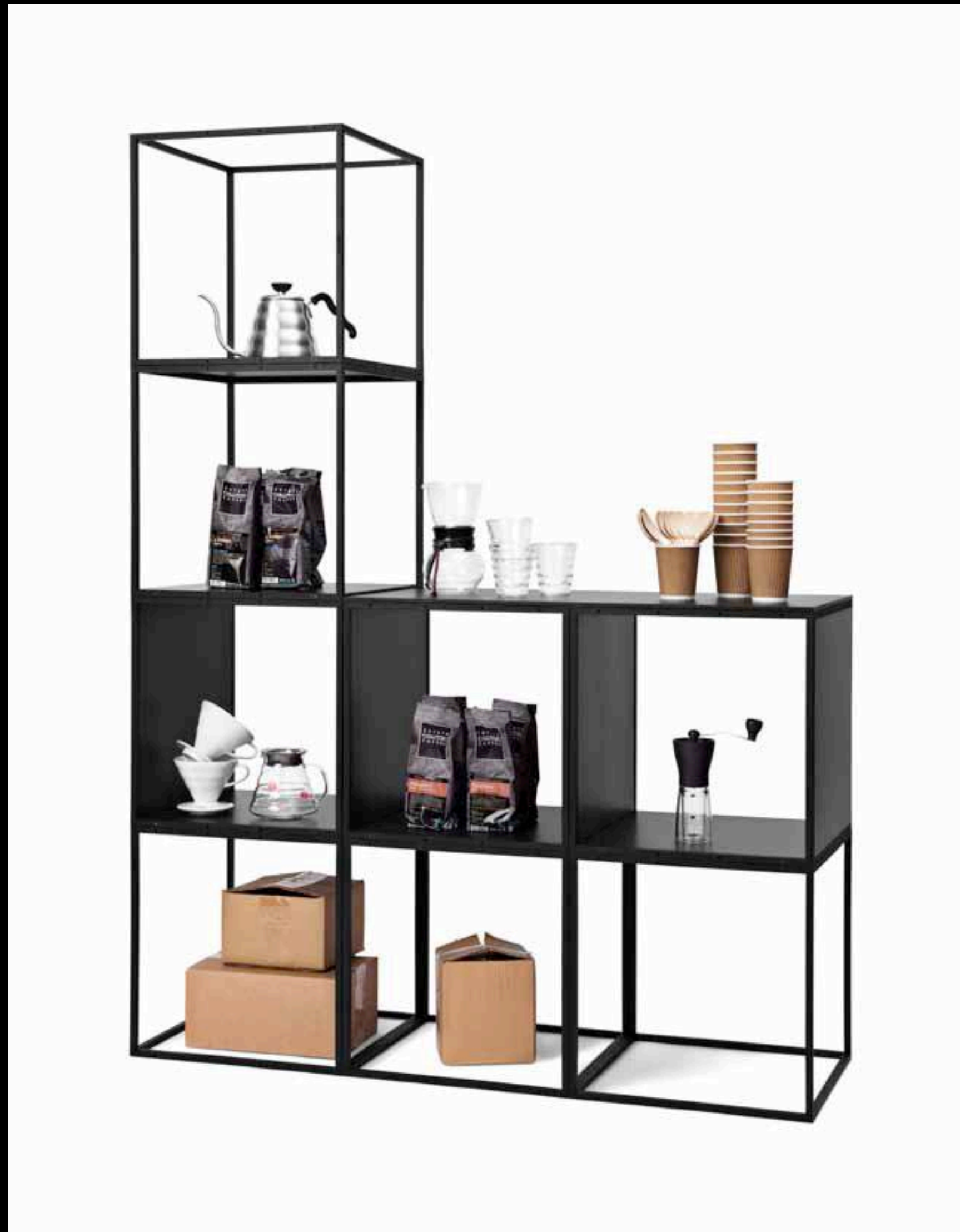
The lightweight GRID modules, available in black or white, are the building blocks of the system.

The GRID module can be connected to one or hundreds of other GRID modules to create a well-defined structure with the dimensions you desire. Once the structure is in place, other GRID components such as drawers, corkboards, magazine shelves, whiteboards, upholstered seats or planters can be added, to transform it into whatever you need: a room divider, a counter, a display unit, a bench, a wall, storage or an art installation.

# GRID



GRID is designed by Peter J. Lassen and produced in Denmark. When a fresh look is needed, or new inspiration arises, the durable GRID modules can be easily disconnected and re-assembled into new designs. GRID brings functionality and elegance into any space and is the perfect combination of an interior system and artistic expressions



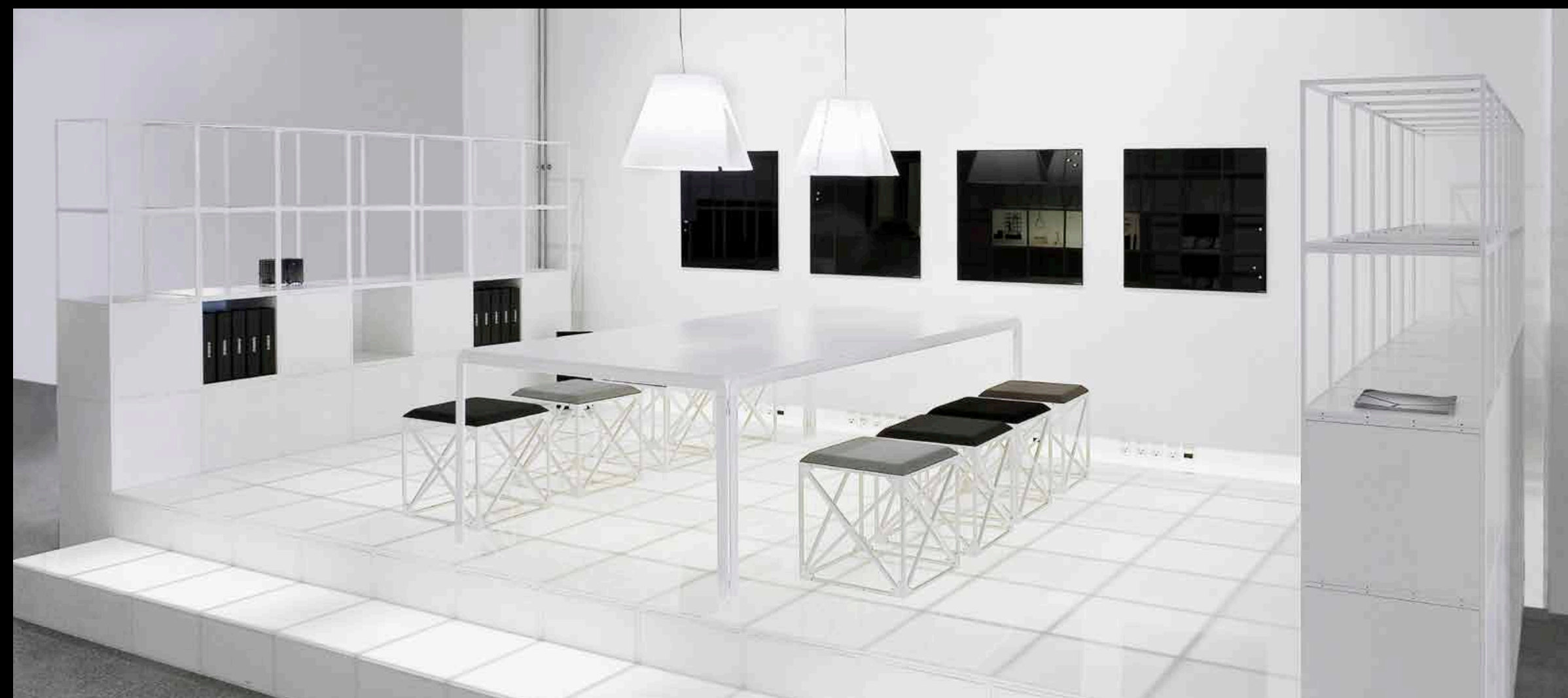
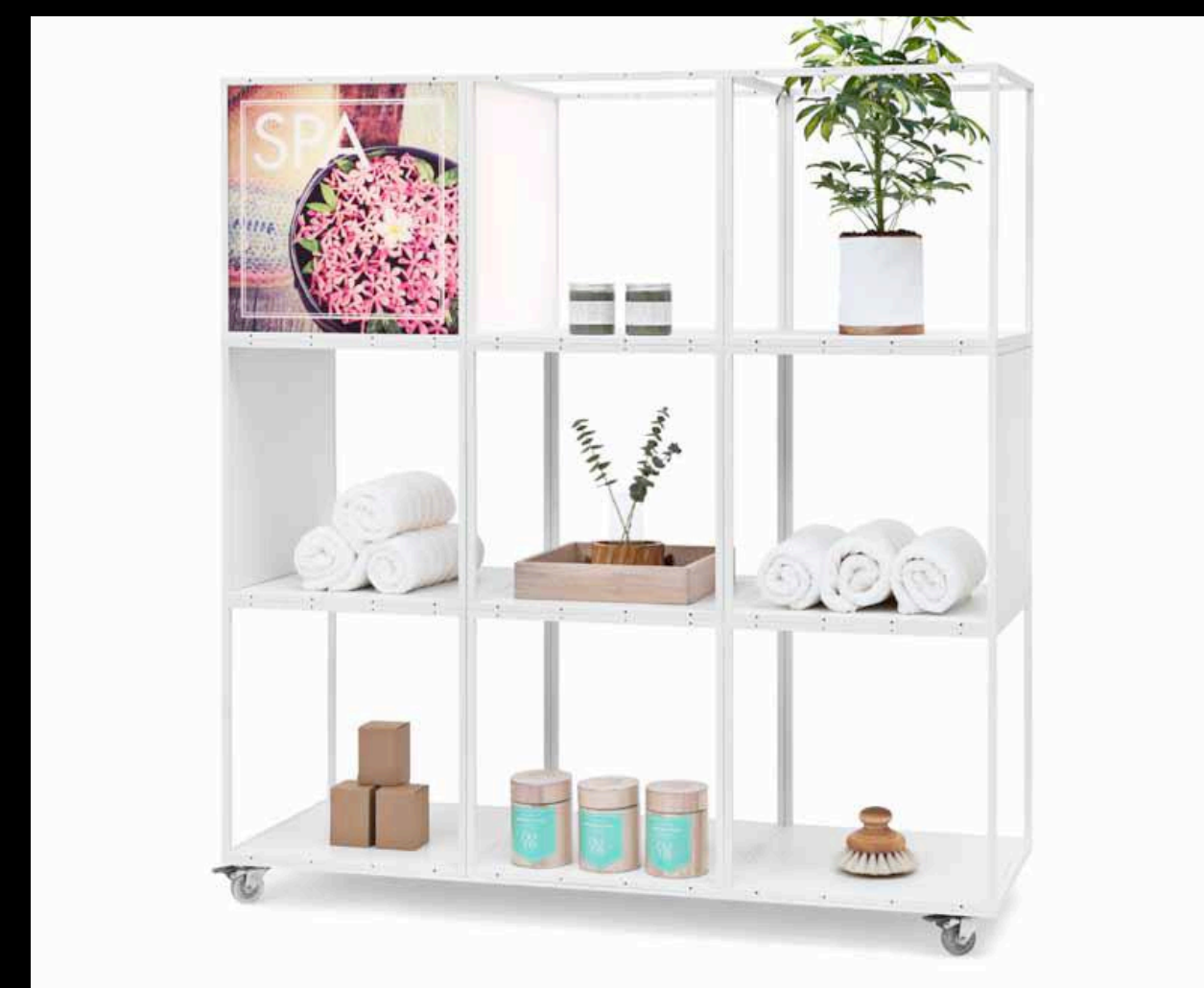
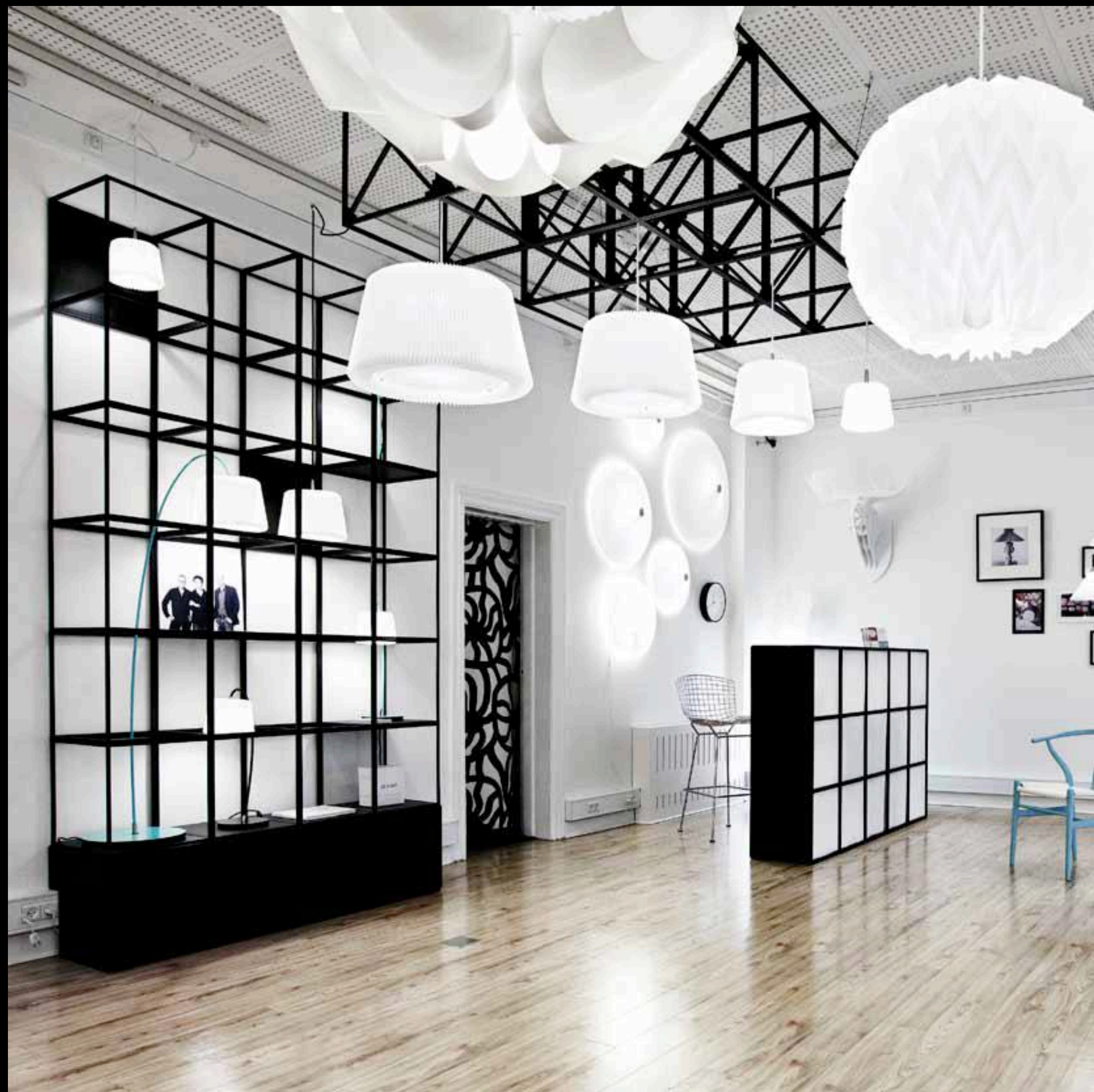
As an interior system GRID offers endless opportunities.

Used as a wall system, display, podium, room divider, frame, seating or to present your latest creation in the most flattering fashion?

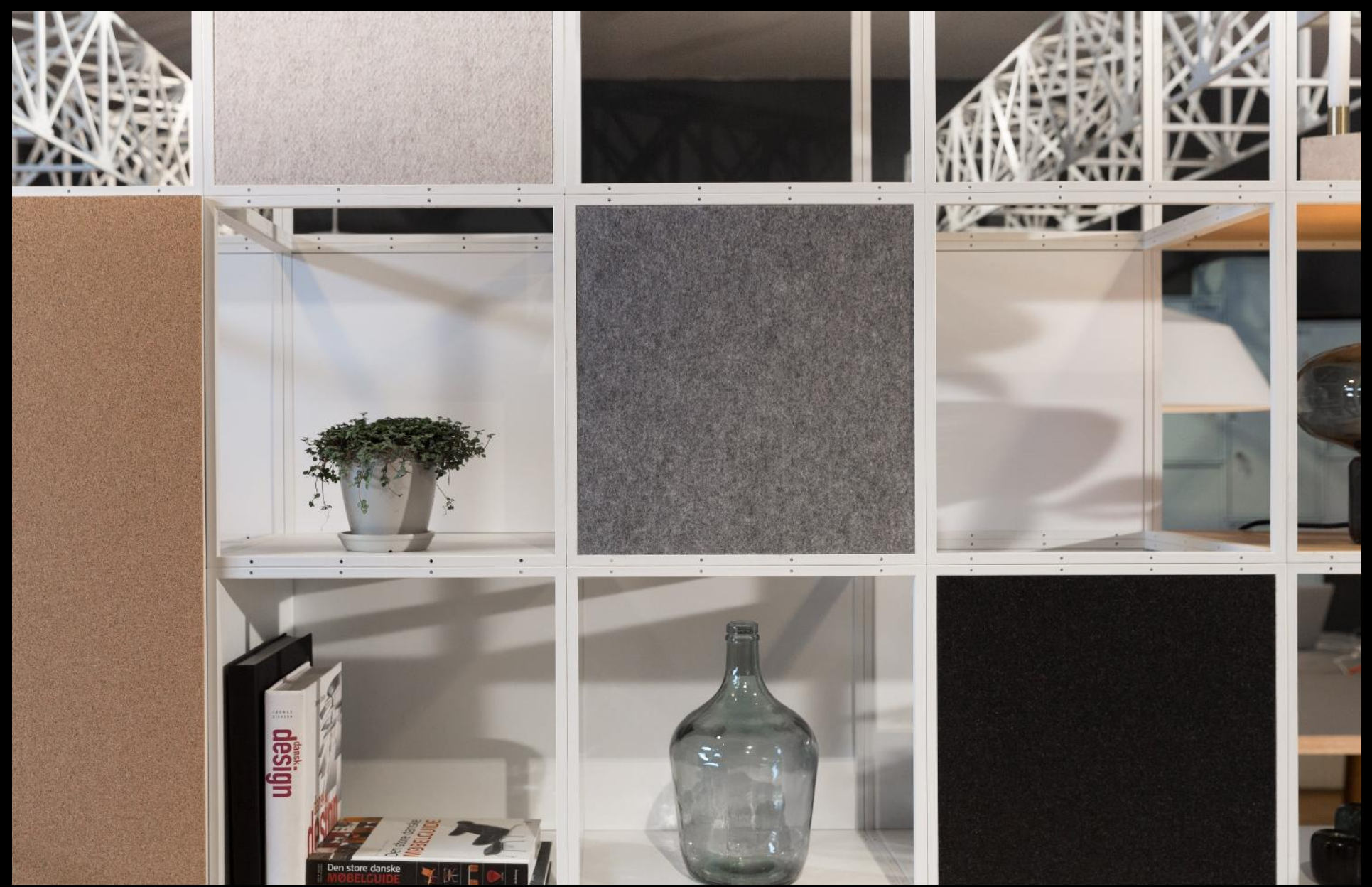


**A single GRID cube measures 40 x 40 x 40 cm. That's all that counts and matters.**

SPIN x mma









# Corporate Pantries



# Independent Unit



# Wall Unit



# Island Unit



# Ceiling Mounted



## With Back Unit



**Thank You**

Operating Hours : Mon - Sat (10 am to 8 pm)  
info@mmdesign.in

MMA Design Experience Center  
Ground Floor, Unit A G02, Brigade Signature Towers  
Old Madras Rd, Kattamanallur, Sannatammanahalli,  
Bengaluru, Karnataka  
562129